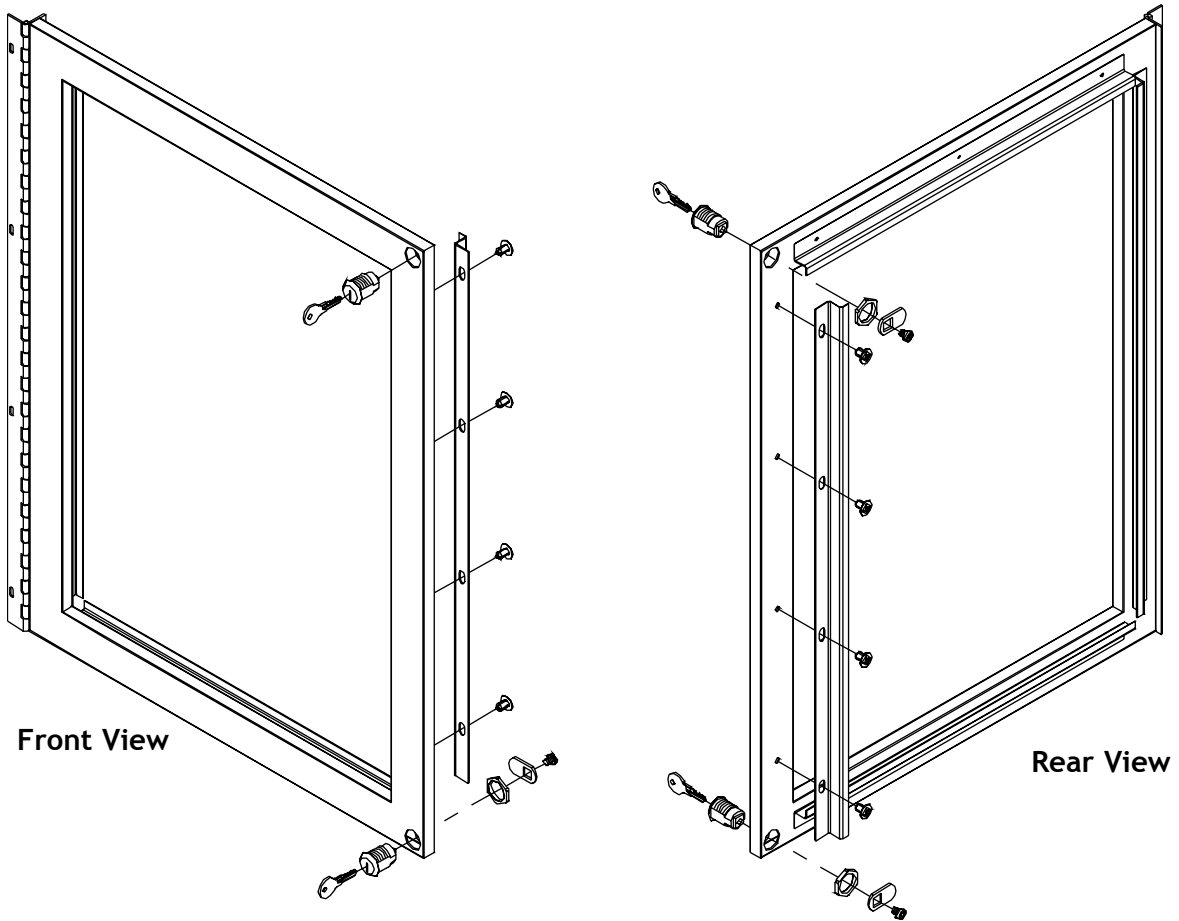


Steel Transparency Frames

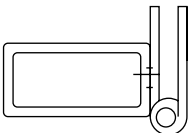
Stylmark's Stainless Steel Transparency Frames hold art or advertising between two glazing panels. The frame can then be backlit to dramatically highlight your product. Frame members are constructed of durable 16 gauge stainless steel with seamless welded corners that give the frame a clean and stylish look. Choose from five unique stainless steel finishes that range from mirror polished to satin brushed. Stainless Steel Transparency Frames ship as a welded assembly, making installation simple.



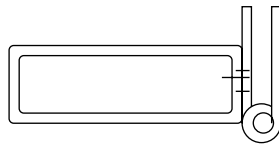
Tube Options

Choose from two tube weldments:

1" x 1/2"
Tube Weldment



1 1/2" x 1/2"
Tube Weldment



Steel Transparency Frames

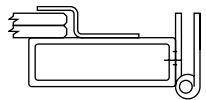
Hinges

Stainless Steel Transparency Frames can be ordered with either a side or top/bottom piano hinge. The maximum finished frame sizes for each differ, as shown below.

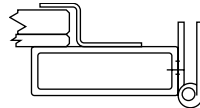
SIZE LIMITATIONS	MAXIMUM WIDTH	MAXIMUM HEIGHT
SIDE HINGE	36"	96"
TOP BOTTOM HINGE	96"	42"

Z-Strips

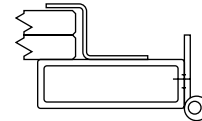
Z-strips hold the panels of glass in place. Three are welded to sides of the frame, and one is removable to allow for installation of the glass panels. Various sizes of Z-Strips are available to fit the following combinations of panel thicknesses (shown here welded with 1 1/2" x 1/2" tube):



(2) 1/8" Panels



(1) 1/8" panel
(1) 1/4" panel



(2) 1/4" panels

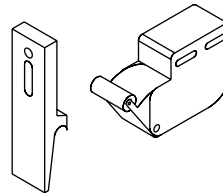
Locks/Latches

Choose from either a push-release latch or a cam lock to prevent unwanted entry.

Part #510199
Cam Lock



Part #510349
Push Latch



STAINLESS STEEL TRANSPARENCY FRAMES		
MODEL #	DESCRIPTION	TOTAL PANEL THICKNESS
618003	1 1/2" x 1/2" WITH ONE LOCK	1/4", 3/8" OR 1/2"
618004	1 1/2" x 1/2" WITH TWO LOCKS	1/4", 3/8" OR 1/2"
618005	1" x 1/2" WITH ONE LATCH	1/4", 3/8" OR 1/2"
618006	1 1/2" x 1/2" WITH TWO LATCHES	1/4", 3/8" OR 1/2"