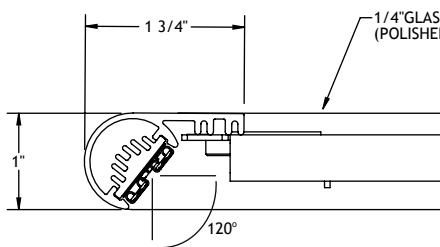
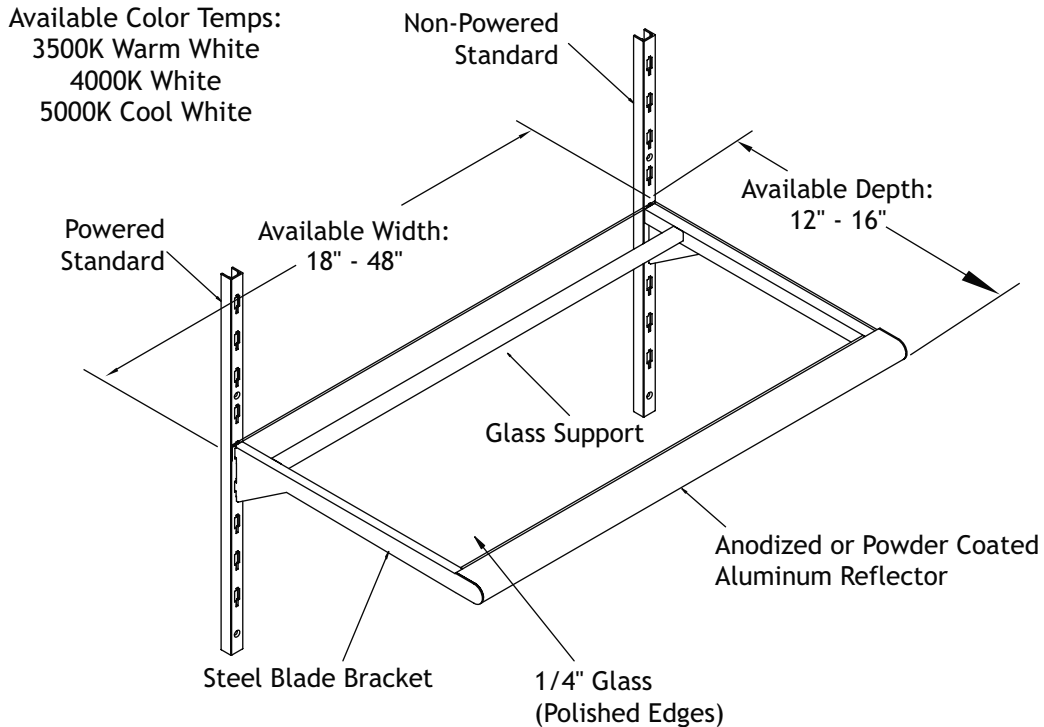
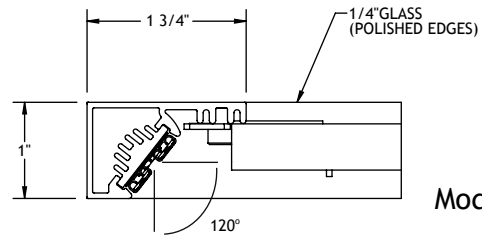


LED Power Track Light Shelf

The LED Power Track Light Shelf provides a low voltage, low maintenance alternative to conventional lighting. The small footprint of the LED emitters allows for a slim profile shelf to maximize viewable merchandising area. With low heat output and no UV, this self-contained lighting unit connects to a Stylmark powered shelf standard and is an ideal solution for cosmetic, crystal, chocolate or fine leather applications.



Model Number
682808



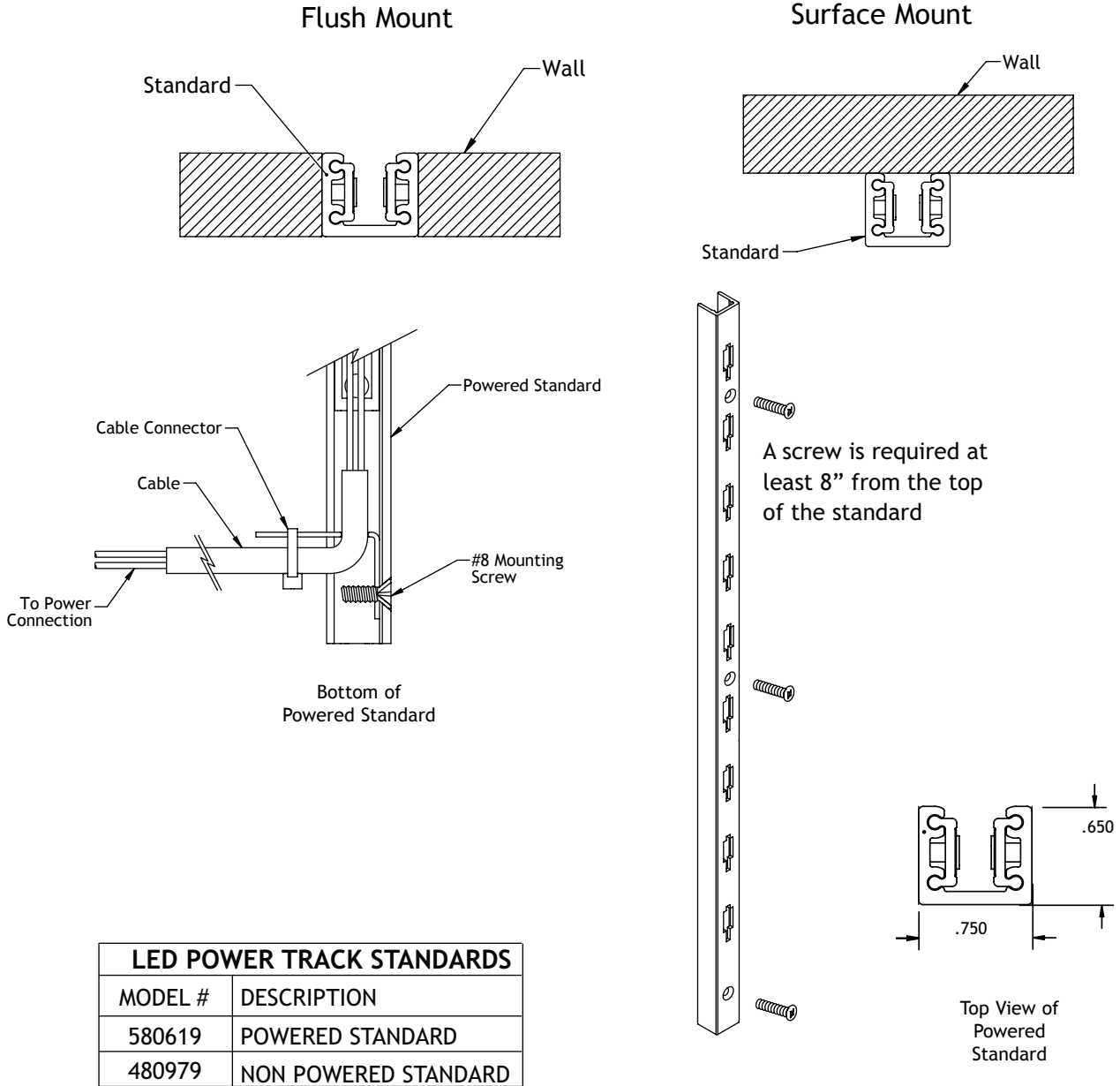
Model Number
685808

LED POWERED LIGHT SHELF	
MODEL #	DESCRIPTION
682808	STEEL POWERED SHELF - ROUND FRONT
685808	STEEL POWERED SHELF - SQUARE FRONT

DESCRIPTION	PART #
SPECIFICATION DRAWING	981068
INSTRUCTION BULLETIN	971416

LVSHF-SPS

LED Power Track Light Shelf



LED POWER TRACK STANDARDS	
MODEL #	DESCRIPTION
580619	POWERED STANDARD
480979	NON POWERED STANDARD

- Notes:**
- LED Power Track Shelf utilizes one powered and one non-powered Stylmark standard, ranging in height from 18" to 96".
 - Glass not supplied.
 - Standards can be anodized to match shelves.
 - Stylmark LED Power Track Light Shelf is ETL listed for U.S. and Canada per UL Standards.

LVSHF-SPS