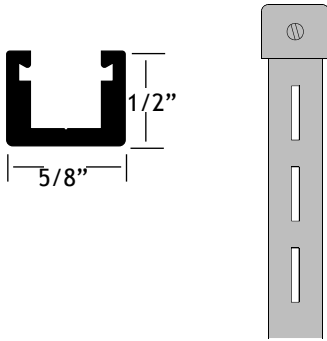


Shelf Standards and Brackets

Aluminum Light Duty Standards and Brackets

Stylmark aluminum light duty standards and brackets are anodized to the same color and finish as other showcase components. They can also be ordered in complementary colors for contrast.

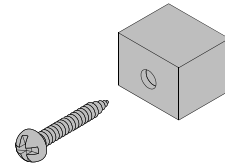
Part # 450010*
Showcase Standard
 Has slotting for conventional brackets. Slots measure 9/16" x 3/32," and are 1" on center.



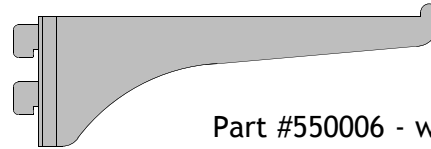
Part # 450022*
Showcase Standard Support
 This insert for #450010 adds support and gives the standard a finished look.



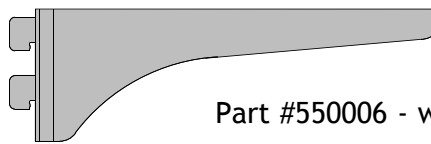
Part # 550007
Foot and Cap Assembly
 Used to fasten a standard at the top and bottom of the showcase. Gray plastic.



Part # 550006: Shelf Bracket
 This aluminum shelf bracket is typically used with 1/4" glass shelving. It is available in 6", 8", 10", 12", 14", and 16" depths, with or without a lip.

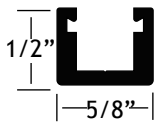


Part #550006 - with lip



Part #550006 - without lip

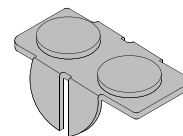
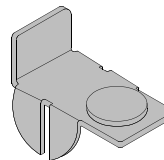
Part # 450013*
Wall Standard
 Used for designs requiring wall mounted standards. Comes with pre-drilled and countersunk holes every six inches.



Steel Shelf Clips

These shelf clips are designed with rubber grommets to cushion the glass resting on our shelf brackets. Available in chrome finish only.

Part #550013: End Clip **Part #550014: Center Clip**



Notes: • *Part numbers #450010, 450022 and 450013 can be ordered as 12ft stock length or fabricated to length

Shelf Standards and Brackets

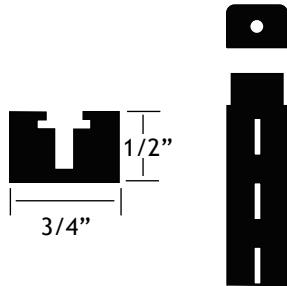
Aluminum Heavy Duty Standards and Brackets

Stylmark's heavy duty aluminum standards with tubular brackets are as durable as steel showcase standards and brackets, but offer the added feature of color and finish options.

Part # 450020*

Heavy Duty Standard

This standard is machined at the top and bottom to accept the #550007 foot and cap assembly. Slots measure 9/16" x 3/32", and are 1" on center.



Part # 450021*

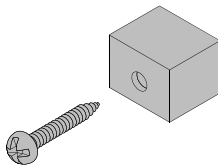
Standard Insert

This insert for #450020 adds support and gives the standard a finished look.



Part # 550007

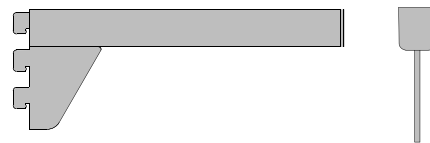
Foot and Cap Assembly
Used to fasten a standard at the top and bottom of the showcase. Gray plastic.



Part # 550010

Heavy Duty Tubular Bracket

Our heavy duty tubular bracket adds a contemporary look with the ability of supporting 3/8" to 1/2" thick glass shelves with ease. It is available in 6", 8", 10", 12", 14", and 16" depths.

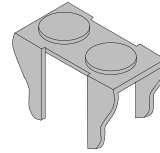
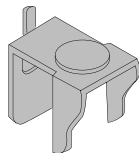


Steel Shelf Clips

These shelf clips are designed with rubber grommets to cushion the glass resting on our tubular brackets. Available in chrome finish only.

Part #550011: End Clip

Part #550012: Center Clip



Notes:

- *Part numbers #450020 and 450021 can be ordered as 12ft stock length or fabricated to length

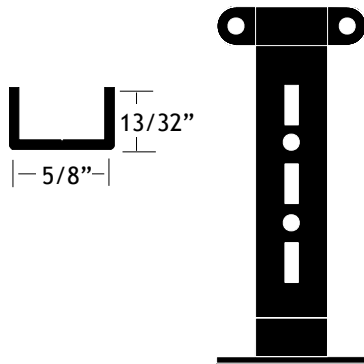
Shelf Standards and Brackets

Steel Standards and Brackets

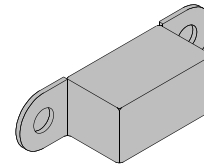
When your design requires extra strength, these Knappe and Vogt (K.V.) steel standards and brackets provide the support you need. These components have an anachrome finish and are not compatible with aluminum standards or brackets.

Steel Standard
Part # 232023: 36"
Part # 232028: 96"

K.V. steel showcase standards have slotting for conventional brackets.



Part # 550009
 Cap Assembly
 Attaches standard at top of showcase.



Brackets
 K.V. steel brackets are available in six sizes:

- | | |
|---------------|-----|
| Part # 232006 | 6" |
| Part # 232008 | 8" |
| Part # 232010 | 10" |
| Part # 232012 | 12" |
| Part # 232014 | 14" |
| Part # 232016 | 16" |



Part # 550008
 Foot Assembly
 Attaches standard at bottom of showcase.

