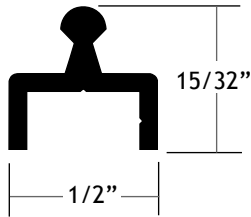


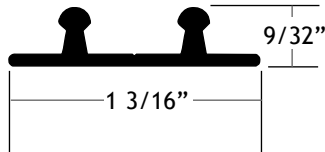
# Rolling Door Components

## Bottom Tracks

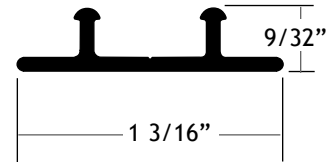
Part # 110009\*  
Drop-In Track



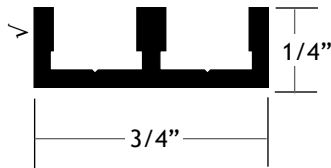
Part # 110019\*  
Double Track



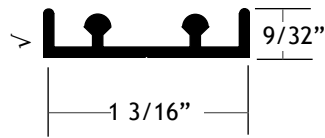
Part # 110021\*  
Glide Track



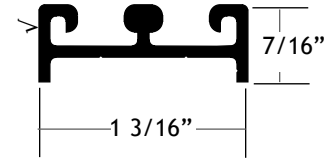
Part # 110035  
Slide Track



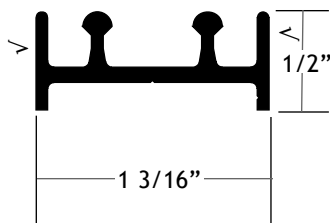
Part # 110063  
Double Channel Track



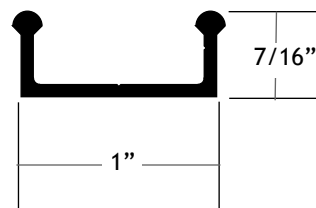
Part # 110072  
Slide Track



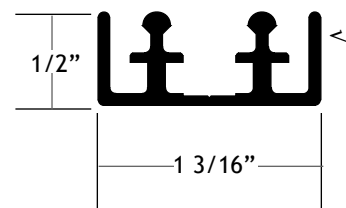
Part # 110078  
Channel Track



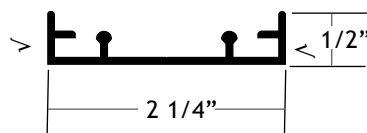
Part # 110079\*  
Wood Door Track



Part # 110178  
Security Track

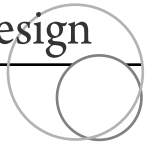


Part # 110208  
Security Track



√ = finished surface  
Drawings are not to scale

**Notes:** • \*These parts do not include a mechanical finish.

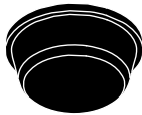


# Rolling Door Components

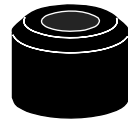
## Bumpers

Adhesive-Backed Bumpers  
1/2" Diameter, 5/32" High

Part # 221014 Gray  
Part # 221015 Clear

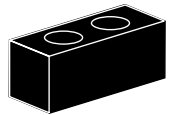


**Part # 510006:** Standard Door Bumper Assembly  
Neoprene bumper with screw and nut attaches to rear of front door to prevent extruded pulls from striking door. Can also be used with flush pulls or finger pulls that are ground into glass doors to prevent pinched finger.



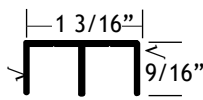
Heavy Duty Door Stop Assemblies

**510014:** 1/2" x 1 1/4" x 1/2," installs in #110007  
**510015:** 1/2" x 1 1/4" x 3/4," installs in #110008  
Neoprene stops have two screws. They attach to the bottom or top opening channels when installing three or more doors on two tracks.

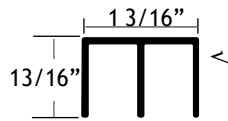


## Track Headers

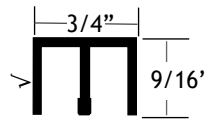
Part # 110007



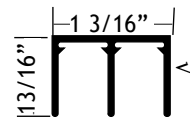
Part # 110008



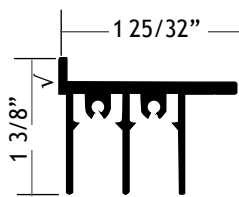
Part # 110036



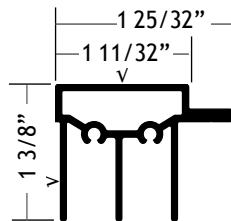
Part # 110064



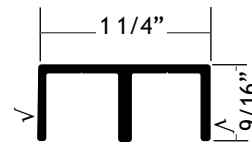
Part # 110071



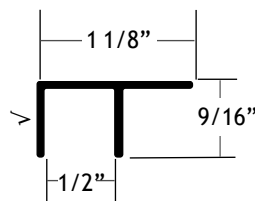
Part # 110102



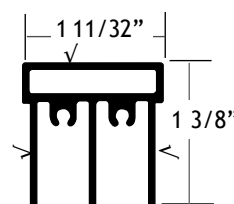
Part # 110343\*



Part # 110372



Part # 110523



Notes: • \*Part #110343 is special order only.

√ = finished surface  
Drawings are not to scale

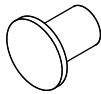
# Rolling Door Components

## Door Accessories

### Part # 222012

#### Rivet

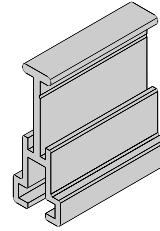
Rivet is 1/8" in diameter with a semi-tubular oval head. Use to fasten #419030 guide to #110024 door top.



### Part # 410381

#### Door Retainer

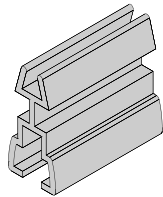
Stakes into bottom shoe to provide anti-jump operation. Shipped two per door. Use with #110140, 110350, or 110412 shoe.



### Part # 410444

#### Door Retainer

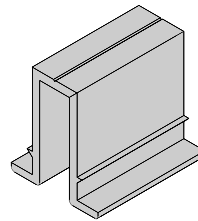
Stakes into bottom shoe to provide anti-jump operation. Shipped two per door. Use with #110012 shoe only.



### Part # 410454

#### Retainer

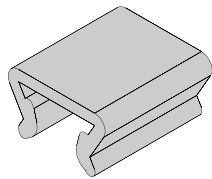
Inserted into wood panel to provide anti-jump. Shipped two per door. Use with #510041 wheel and #110208 track only.



### Part # 419007

#### Top Silencing Guide

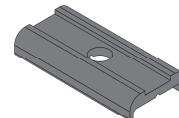
Black vinyl guide snaps on top of a 3/16" - 1/4" thick door panel.



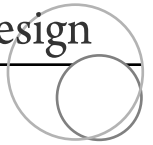
### Part # 419030

#### Top Guide

Rivets to extrusion #110024 at door top.



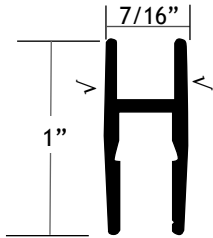
Drawings are not to scale



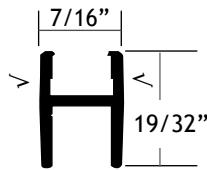
# Rolling Door Components

## Shoes

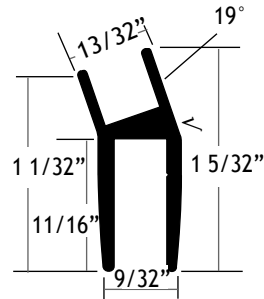
Part # 110012



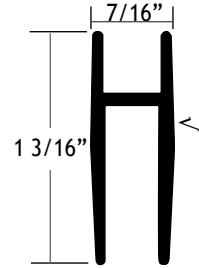
Part # 110014



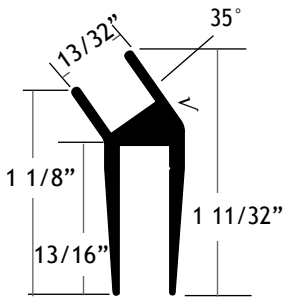
Part # 110066



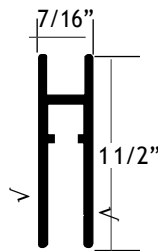
Part # 110067



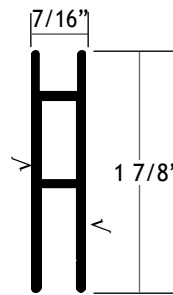
Part # 110076



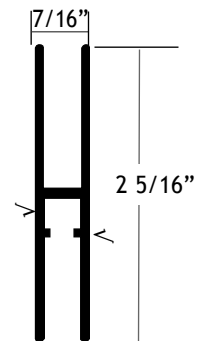
Part # 110140



Part # 110350

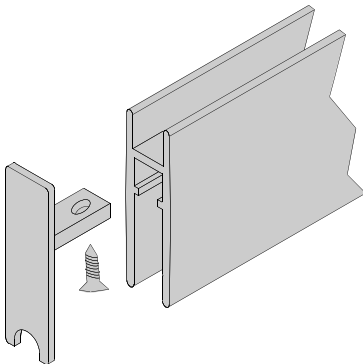


Part # 110412



## Endcap Assemblies

Cap	Shoe
510241	110140
510331	110350
510371	110412



## Wheels

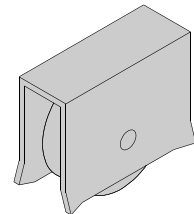
### Part # 510001

#### Standard Wheel Assembly (W1)

Use with doors to 50 lbs. Press fits in #110012 shoe or 1/4" wide by 5/8" deep groove.

Wheel diameter is 9/16".

Wheel housing is 3/4" x 9/16" x 1/4".

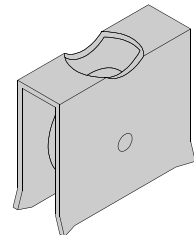


### Part # 510041

#### Heavy Duty Wheel Assembly (W5)

Use with doors to 80 lbs. Press fits in #110067, 110140, 110350, and 110412 shoes or 1/4" wide by 13/16" deep groove. Wheel diameter is 19/32".

Wheel housing is 7/8" x 3/4" x 1/4".



√ = finished surface  
Drawings are not to scale