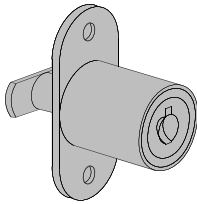


Locks and Latches

Stylmark provides a Kenstan K-41 chrome finish lock as a standard component. Stylmark provides fabrication for Best lock 2S & 4S series. Stylmark shoe #110350 (see page 15) is designed to accommodate the Best 4S series lock. Best Locks not supplied by Stylmark.

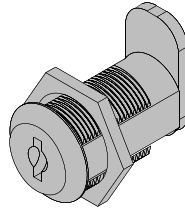
Part # 510187

Chrome T-Bolt Lock
The Kenstan K-45 is typically used with our security by-pass door system.



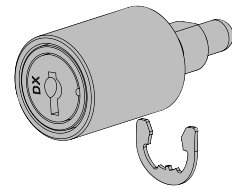
Part # 510199

Chrome Cam Lock
Kenstan K-13 lock can be used with #110153 hinged door frame extrusion. One key available.



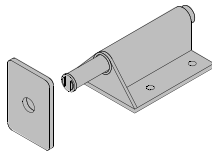
Part # 511040

Chrome Plunger Lock
Small profile lock installs in the #110012 and #110067 shoes. Six key types are available.



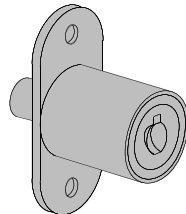
Part # 510245

Push Latch
This magnetic push latch is an alternate to the #510349 latch.



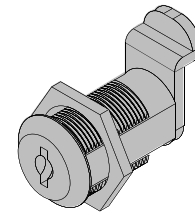
Part # 510808

Lock
The Kenstan K-41 showcase lock installs in the #110140, 110350, and 110412 shoes. Five key types are available. The key stays in lock in open position.



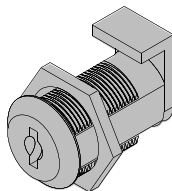
Part # 510249

Offset Cam Lock
Use with showcase frame #710000 series, top or bottom hinged door.



Part # 510269

'L' Cam Lock
For use with showcase frame #710000 series, side-hinged door.



Part # 510349

Push Latch
This mechanical push latch is used with hinged door or transparency frames.

