



Data Sheet

Optima 450 LED™ Edge-Lit Light Box



General Description: The Optima 450 LED™ Edge-Lit Light Box is designed to be the brightest LED edge-lit light box while being the most customizable offering of its kind in the industry. Utilizing the mitered corner PrintFrame™ makes changing graphics a snap. The unique LED placement and advanced design delivers bright, even illumination & eliminates hot spots. Available in Stylmark’s wide variety of colors and finishes, the Optima 450 LED™ Edge-Lit Light Box can be wall mounted or suspended from the ceiling. Double-sided units and custom-sized units are also available.

Applications: Retail environments, airports, museums, restaurants

Key Features:

- High brightness and even uniformity
- PrintFrame™ snap frame
- ADA Compliant, <1" depth from wall
- Standard and custom sizes
- 2 year Warranty

Dimensions:

- Cabinet Depth:**
- Single-sided:** 0.97"
- Double-sided:** 2.25"
- Graphic Size:**
 - 6 standard sizes (see table)
 - Custom sizes (W x H)
 - Minimum size: 8" x 8"
 - Maximum size: 48" x 96"
- Cabinet Size:** Add 2" (51mm) to W x H
- Visual Size:** Subtract 3/4" (19mm) from W x H

Lighting Performance: High Brightness

Construction Specifications:

- Frame Type:** 1-3/8" PrintFrame™ snap frame with mitered corners
- Frame Material:** Anodized or painted aluminum
- Frame Finish:** See Stylmark Color Library

Power Specifications & Circuit Sizing:

- Voltage:** 100~240VAC (50/60 Hz)
- Current @120VAC:** 0.100A per foot of lit edge
- LED Power Consumption:** 4 watts per foot of lit edge (@24VDC)
- Power Supply type:** External
- Cord Length:** 60" cord supplied with unit

Weight:

- Single-sided** approx. 4.0 lbs per sq ft
- Double-sided** approx. 7.5 lbs per sq ft

Environmental Specifications:

- Protection Rating:** For indoor use only – Dry locations
- Temperature Range:** -40 to 104°F (4 to 40°C)

Options:

- Wall Mount
- Eyelets for Ceiling Mount (Double-sided only)
- Pedestal Mount (contact Stylmark representative)
- .015" (0.4mm) clear face sheet for non-laminated graphic materials



UL48
File No. E226551
ADA – Compliant

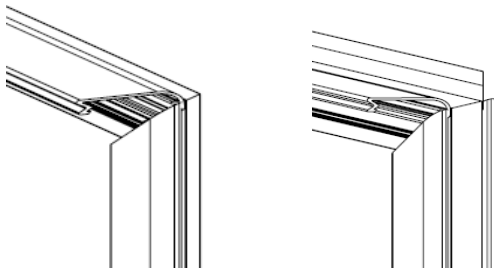
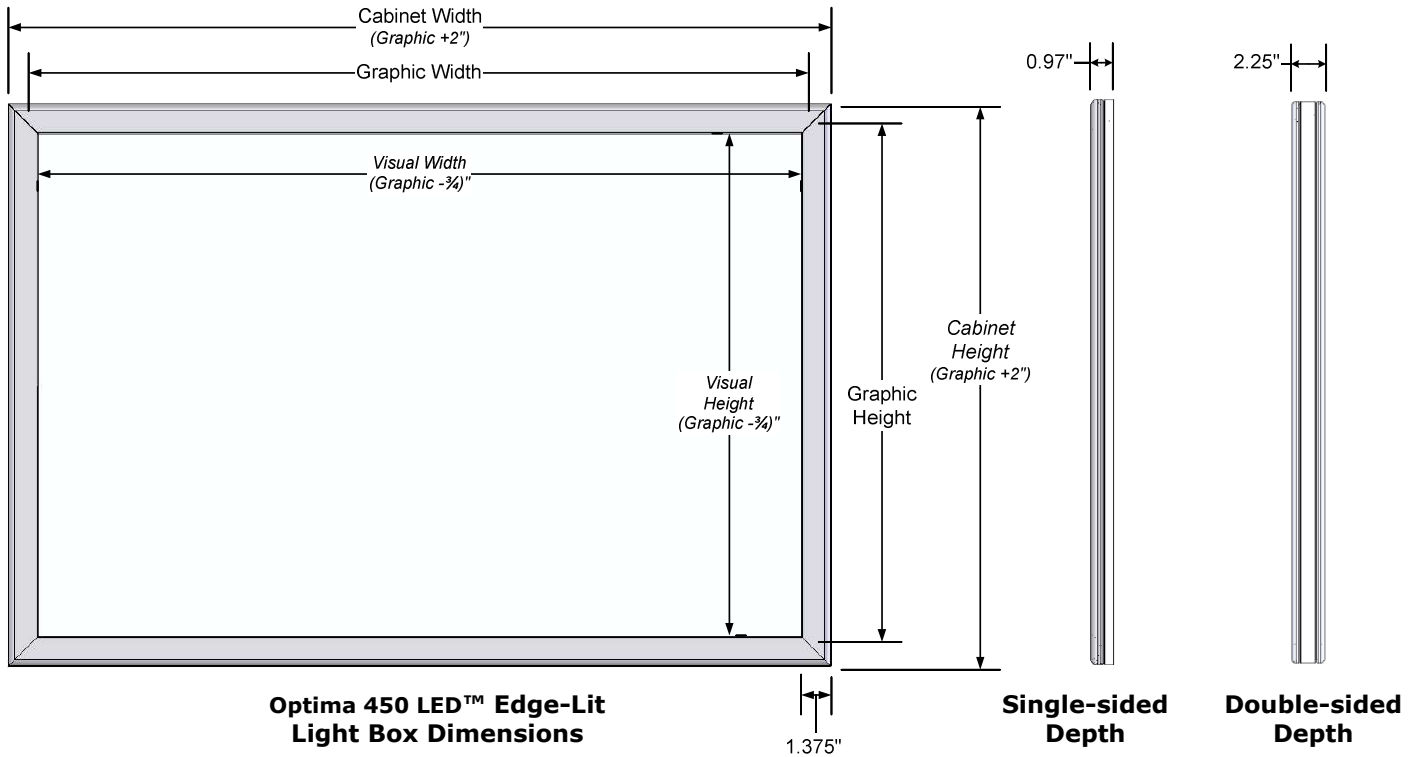
In order to continually improve our products, Stylmark reserves the right to make changes to specifications or materials without prior notice.

Sheet# 971668
Revision A (08/11)

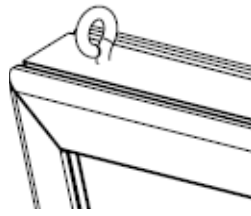
Ordering Information:

Optima 450 LED™ Edge-Lit Light Box				
Identification	Description	Graphic Size	Visual Size	Cabinet Size
690145-01	Optima 450 LED™ Edge-lit Light Box, Single-sided with mitered corner PrintFrame™ snap frame, Satin Natural (020) finish	20" x 24"	19-1/4" x 23-1/4"	22" x 26"
690145-02		22" x 28"	21-1/4" x 27-1/4"	24" x 30"
690145-03		24" x 30"	23-1/4" x 29-1/4"	26" x 32"
690145-04		24" x 36"	23-1/4" x 35-1/4"	26" x 38"
690145-05		30" x 40"	29-1/4" x 39-1/4"	32" x 42"
690145-06		36" x 48"	35-1/4" x 47-1/4"	38" x 50"
690154-01	Optima 450 LED™ Edge-lit Light Box, Double-sided with mitered corner PrintFrame™ snap frame, Satin Natural (020) finish	20" x 24"	19-1/4" x 23-1/4"	22" x 26"
690154-02		22" x 28"	21-1/4" x 27-1/4"	24" x 30"
690154-03		24" x 30"	23-1/4" x 29-1/4"	26" x 32"
690154-04		24" x 36"	23-1/4" x 35-1/4"	26" x 38"
690154-05		30" x 40"	29-1/4" x 39-1/4"	32" x 42"
690154-06		36" x 48"	35-1/4" x 47-1/4"	38" x 50"

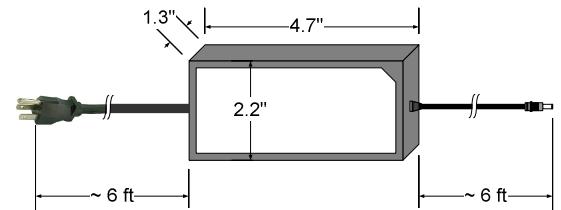
- Specify W x H orientation and wall or hanging mounting on order.
- Contact Stylmark for customized options or sizes.



All PrintFrame™ snap frames open on all four sides for easy graphic changes



Eyelet for Ceiling Mount



External Power Supply

Sheet# 971668
Revision A (08/11)